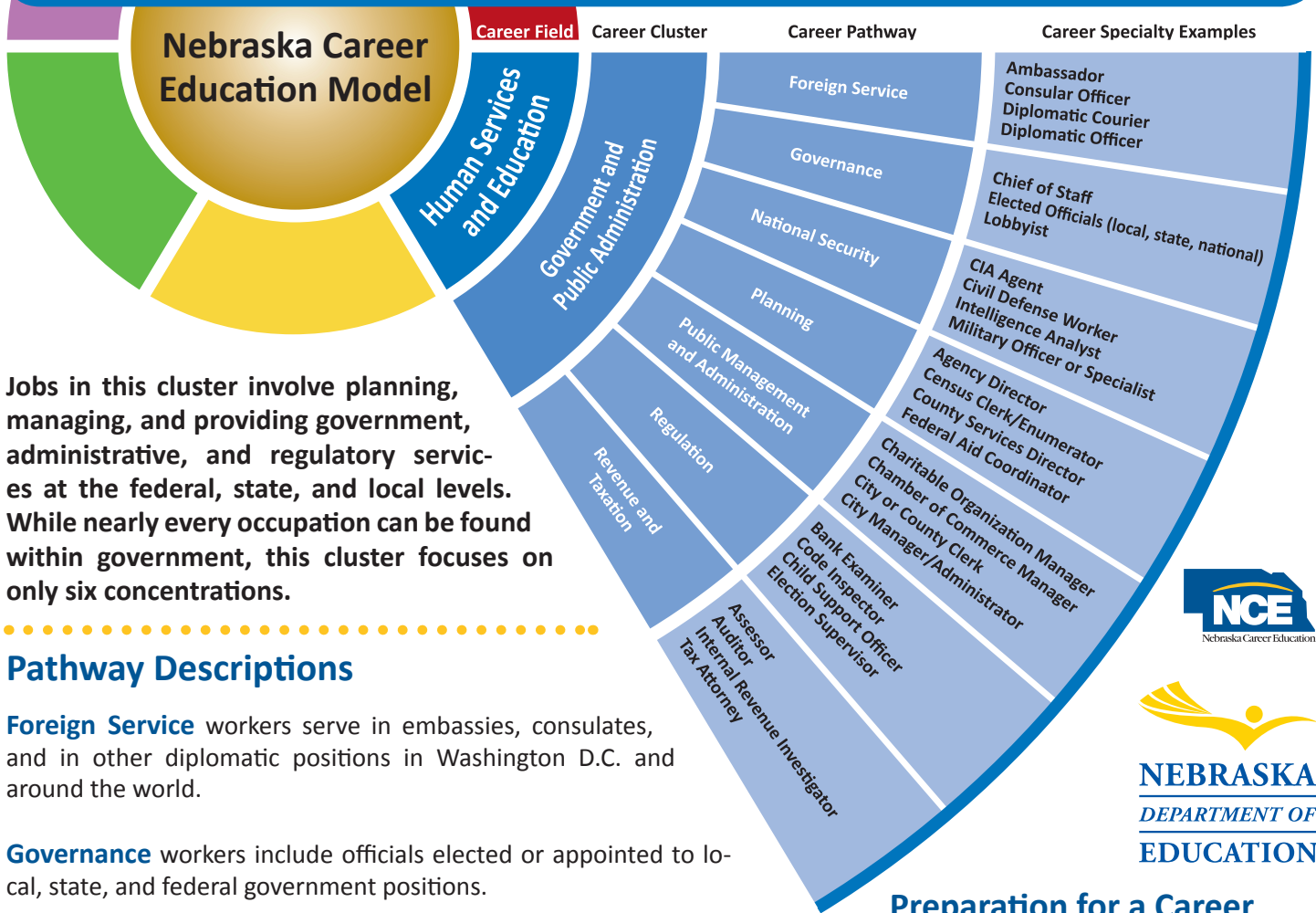


Career Cluster: Government and Public Administration



Jobs in this cluster involve planning, managing, and providing government, administrative, and regulatory services at the federal, state, and local levels. While nearly every occupation can be found within government, this cluster focuses on only six concentrations.

Pathway Descriptions

Foreign Service workers serve in embassies, consulates, and in other diplomatic positions in Washington D.C. and around the world.

Governance workers include officials elected or appointed to local, state, and federal government positions.

National Security workers protect American interests around the world and provide for a safe environment for American citizens.

Planning workers develop land use policies, promote best use of a community's resources, and provide data for officials to make informed decisions.

Public Management and Administration workers are stewards of public resources and work in positions within local, state, or federal agencies.

Regulation workers protect our health, safety, and environment as well as ensure the integrity of our financial transportation and public utilities.

Revenue and Taxation workers ensure that governmental units collect tax dollars, review tax returns, conduct audits, and collect overdue tax dollars.

Preparation for a Career in this Cluster Includes...

Nebraska Career Education Coursework

- Intro to Human Services and Resources
- Business Law
- International Business
- Information Technology Applications
- Accounting
- American Government and Comparative Political Systems

Extended Learning

- Debate Team
- Mock Trial
- Jr. Reserve Officers' Training Corps (JROTC)
- Speech Team
- Student Council
- Other Student Organizations with a Leadership Focus
- Attend Local Government Meetings
- Boys and Girls State
- County Government Day
- Community Service in Occupations in this Cluster
- Junior Achievement
- Leadership Development Programs

- Job shadow professionals
- Participate in internships
- Secure part-time employment
- Volunteer in this career area

Postsecondary Options: Government and Public Administration

Students preparing for a career in the Government and Public Administration Career Cluster have a variety of postsecondary options. They can enter programs leading to a certificate or a degree at the associate, baccalaureate, or advanced degree level. The table below shows examples of postsecondary Government and Public Administration Career Cluster programs of study organized by pathway.

	High School Diploma On-the-Job Training	Certificate/License	Associate's Degree	Bachelor's Degree	Master's/Doctoral Professional Degree
Foreign Service				International Studies Sociology Geography and History International Business Economics Statistics	Survey, Research, and Methodology Sociology Economics Statistics
Governance				Political Science Geography Economics Statistics	Political Science Geography Economics Statistics Research and Methodology
National Security				Military Science Psychology Electrical or Computer Engineering Foreign Language	Survey, Research, and Methodology
Planning				Economics Geography Engineering	Community and Regional Planning Economics Architecture Geography Survey, Research, and Methodology
Public Management and Administration				Actuarial Science Management Business Administration Economics Statistics	Public Administration Survey, Research, and Methodology Actuarial Science Management Economics Statistics
Regulation				Food Science and Technology International Business Economics Statistics	Survey, Research, and Methodology Food Science and Technology Economics Statistics
Revenue and Taxation				Accounting Economics Finance Actuarial Science Statistics	Accounting Economics Finance Actuarial Science Family Financial Planning Research and Methodology

For additional information on the Government and Public Administration Career Cluster please contact:

Carol Ringenberg
Human Services and Education
Career Field Specialist

Nebraska Department of Education
301 Centennial Mall South
Lincoln, NE 68509

Phone: 402-471-4813
Email: carol.ringenberg@nebraska.gov
Web: www.education.ne.gov/HSR